

10 SOLAR PANELS
Save up to 50% on your electricity bills annually*



1,920 Sq.Ft.

 **3** Bed

 **2.5** Bath

 **2** Car

BENTLEY24

INQUIRE FOR PRICING

102 SUNLAND WAY
SHERWOOD PARK, AB

B18-149-0007
Elevation HZ

JAYMAN'S STANDARD INCLUSIONS

- Core Performance with 10 Solar Panels
- BuiltGreen Canada standard, with an EnerGuide Rating
- UV-C Ultraviolet Light Air Purification System
- High Efficiency Furnace with Merv 13 Filters & HRV Unit
- Navien-Brand Tankless Hot Water Heater
- Triple Pane Windows
- Smart Home Technology Solutions

ADDITIONAL FEATURES

- Extra Fit & Finish™
- Professionally Designed Ecru Colour Palette
- Premium Siding
- Convenient Side Entrance
- Walk-In Kitchen Pantry
- Electric Fireplace with 17' Bumpout in Great Room
- Main Floor Spindle Railing
- Upper Floor Central Bonus Room
- Legal Suite Rough-In

AVAILABLE HOME



Renderings and images are representational only.

TO VIEW YOUR NEW DREAM HOME, CONTACT:

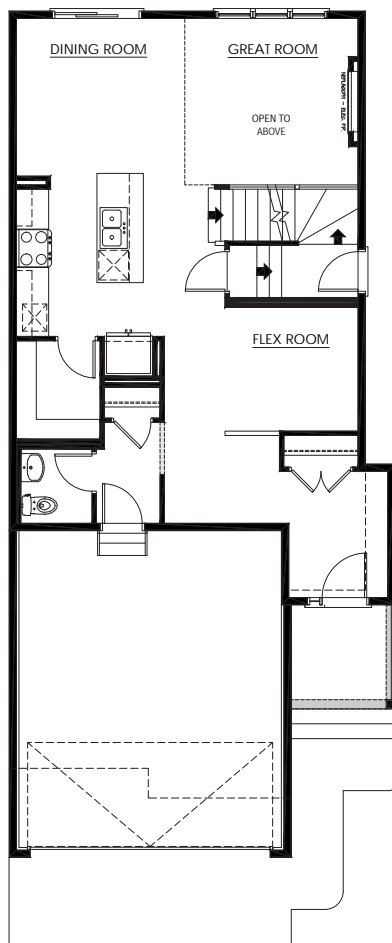
Sandi Stark, Area Sales Manager
780.416.8532 | summerwood@Jayman.com | Jayman.com



LIFE READY FOR THE WAY YOU LIVE

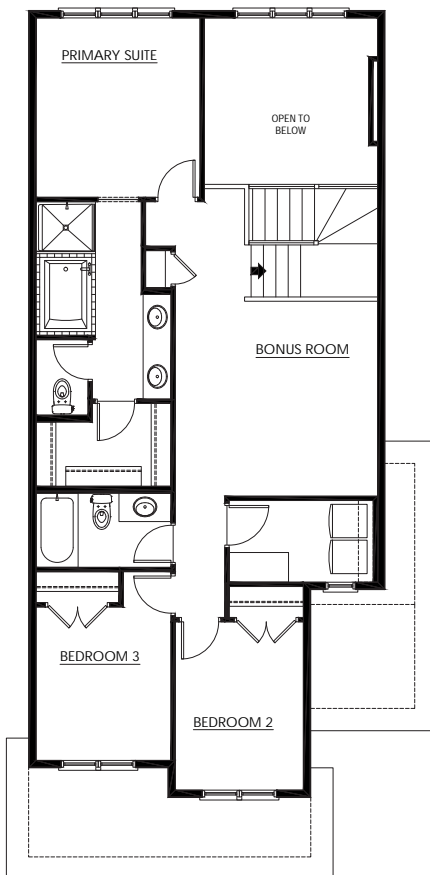
MAIN FLOOR 868 Sq.Ft.

- Open Flex Room
- Central Kitchen with Island Eating Bar
- Convenient Walk-In Pantry
- Electric Fireplace in Great Room



UPPER FLOOR 1,052 Sq.Ft.

- 5-Piece Primary Ensuite to Walk-In Closet
- Laundry Room with Folding Counter
- Spacious Central Bonus Room



ECRU COLOUR PALETTE



IT'S EASIER THAN EVER TO JOIN THE **JAYMAN FAMILY**



JayLink by Jayman Realty

Secure the home you really want while Jayman Realty focuses on the sale of your existing home with a JayLink, or Jayman Realty's Resale Equity Action Plan. To simplify your move, Jayman Realty can make the purchase of your new home subject to the sale of your existing home. You will receive 48 hours notice if another party puts an offer on your new home.



Providing you the absolute **BEST MORTGAGE**

Buying a new home is one of the most important financial decisions you will make. Our mortgage professionals will guide you through the entire process, providing you with expert advice to find the best financing solution for your new Jayman BUILT home.

DISCOVER YOUR NEXT HOME AT [Jayman.com](https://www.jayman.com)

Reflects 2025 Fit & Finish™ specifications. Specifications subject to change without notice. Renderings and images are representational only. Products and colours may be discontinued or unavailable at time of construction and a substitution required. Floorplans, specifications, windows and dimensions shown are approximate and are subject to change without notice. This document is intended for marketing purposes only and does not constitute part of the purchase agreement. E.&O.E *Electricity savings do not include administration and other associated fees.

\$21,000
IN ENERGY EFFICIENT
FEATURES INCLUDED!