

10 SOLAR PANELS
Save up to 50% on your electricity bills annually*



1,993 Sq.Ft.

 **3** Bed

 **2.5** Bath

 **2** Car

BENTLEY24

INQUIRE FOR PRICING

9331 229 STREET NW
EDMONTON, AB

B43-031-0017
Elevation NX

JAYMAN'S STANDARD INCLUSIONS

- Core Performance with 10 Solar Panels
- BuiltGreen Canada standard, with an EnerGuide Rating
- UV-C Ultraviolet Light Air Purification System
- High Efficiency Furnace with Merv 13 Filters & HRV Unit
- Navien-Brand Tankless Hot Water Heater
- Triple Pane Windows
- Smart Home Technology Solutions

ADDITIONAL FEATURES

- Extra Fit & Finish™
- Professionally Designed Cosmo Elevated Colour Palette
- Main Floor Flex Room
- Open to Above Great Room
- Railing to Upper Floor
- Expanded Great Room, Dining Room & Primary Suite
- Upper Floor Central Bonus Room
- 3-Piece Rough-In Plumbing in Basement

AVAILABLE HOME



Renderings and images are representational only.

TO VIEW YOUR NEW DREAM HOME, CONTACT:

Jennifer Knapp, Area Sales Manager
780.756.2057 | secord@Jayman.com | Jayman.com



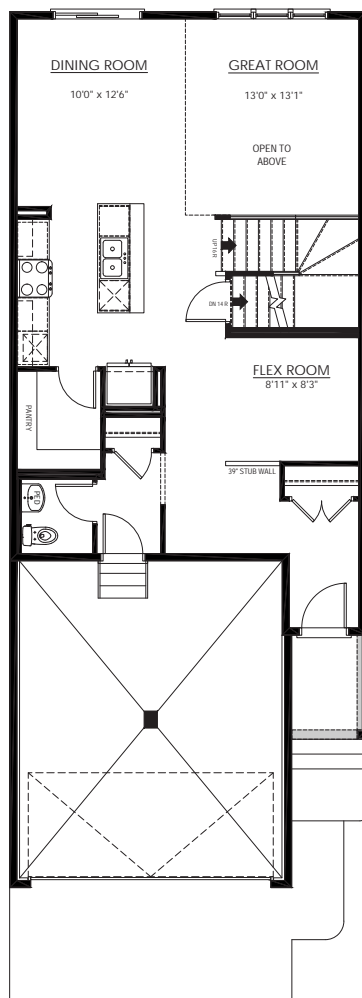
LIFE READY FOR THE WAY YOU LIVE

\$21,000
IN ENERGY EFFICIENT
FEATURES INCLUDED!

MAIN FLOOR

916 Sq.Ft.

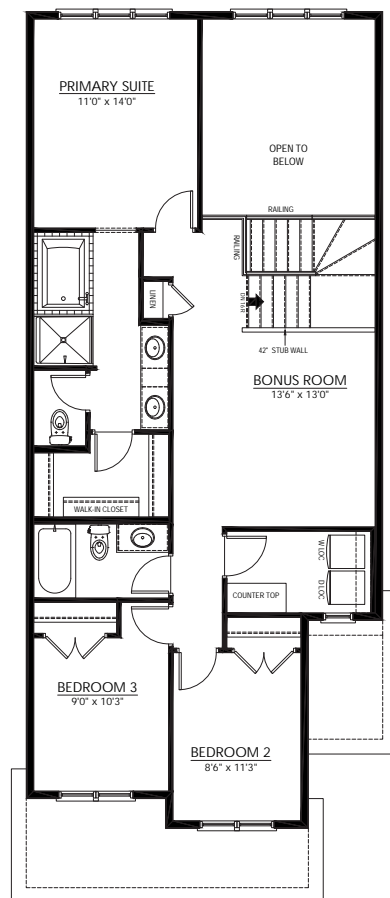
- Front Flex Room
- Spacious Walk-In Pantry
- Central Kitchen with Island Eating Bar
- Expanded Great Room & Dining Room
- Open to above Great Room



UPPER FLOOR

1,077 Sq.Ft.

- 5-Piece Primary Ensuite with Walk-In Closet
- Expanded Primary Suite
- Central Bonus Room
- Laundry Room with Folding Counter



COSMO ELEVATED COLOUR PALETTE



IT'S EASIER THAN EVER TO
JOIN THE **JAYMAN FAMILY**



JayLink by Jayman Realty

Secure the home you really want while Jayman Realty focuses on the sale of your existing home with a JayLink, or Jayman Realty's Resale Equity Action Plan. To simplify your move, Jayman Realty can make the purchase of your new home subject to the sale of your existing home. You will receive 48 hours notice if another party puts an offer on your new home.

Providing you the absolute BEST MORTGAGE

Buying a new home is one of the most important financial decisions you will make. Our mortgage professionals will guide you through the entire process, providing you with expert advice to find the best financing solution for your new Jayman BUILT home.

DISCOVER YOUR NEXT HOME AT Jayman.com

Reflects 2024 Fit & Finish™ specifications. Renderings and images are representational only. Specifications subject to change without notice. Products and colours may be discontinued or unavailable at time of construction and a substitution required. This document is intended for marketing purposes only and does not constitute part of the purchase agreement. E.&O.E *Electricity savings do not include administration and other associated fees. Build time estimated from the date of the firm sale.