

10 SOLAR PANELS  
Save up to 50% on your electricity bills annually\*



**1,250** Sq.Ft.



**3** Bed



**2.5** Bath

# BRADY18

**INQUIRE FOR PRICING**

3627 6 AVENUE SW  
EDMONTON, AB

Q94-005-0028  
Elevation WY

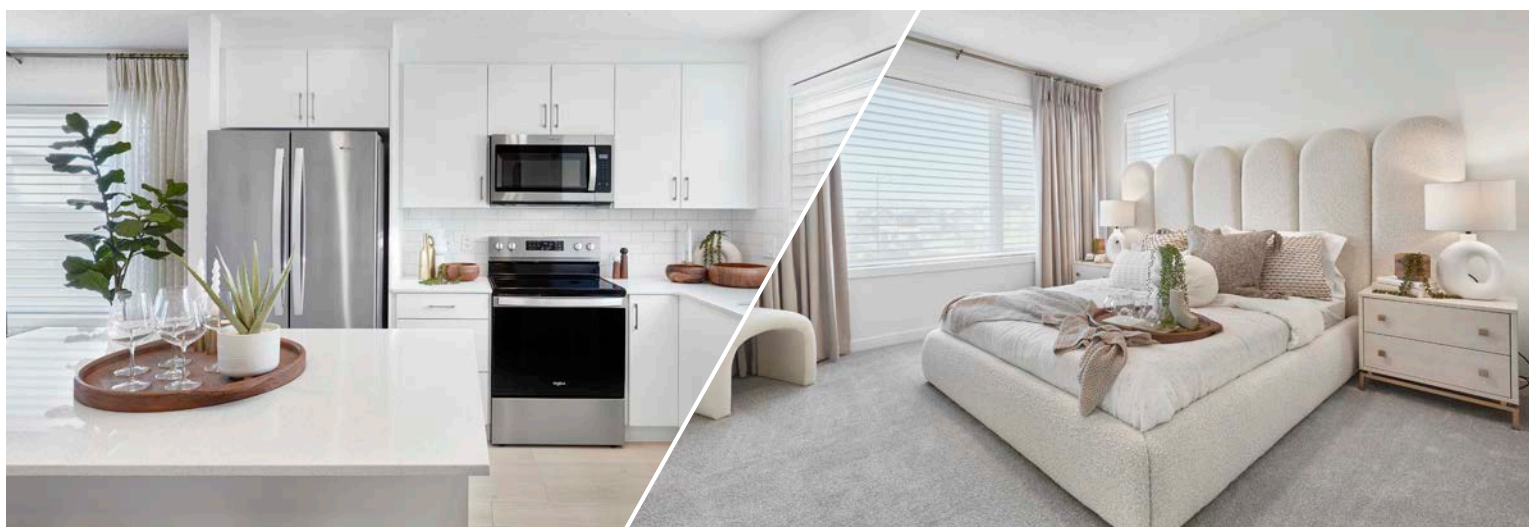
## JAYMAN'S STANDARD INCLUSIONS

- Core Performance with 10 Solar Panels
- BuiltGreen Canada standard, with an EnerGuide Rating
- UV-C Ultraviolet Light Air Purification System
- High Efficiency Furnace with Merv 13 Filters & HRV Unit
- Navien-Brand Tankless Hot Water Heater
- Triple Pane Windows
- Smart Home Technology Solutions

## ADDITIONAL FEATURES

- Select FIT & FINISH™
- Sleet Elevated Colour Palette
- Stainless Steel Kitchen Appliances
- Quartz Kitchen Countertops
- Waterproof Laminate Flooring
- Convenient Side Entrance
- Basement 3-Piece Rough-In Plumbing

**HOME UNDER CONSTRUCTION**



Renderings and images are representational only.

**TO VIEW YOUR NEW DREAM HOME, CONTACT:**

Ana Popa | The Hills at Charlesworth  
780.757.7632 | charlesworthfd@jayman.com | Jayman.com

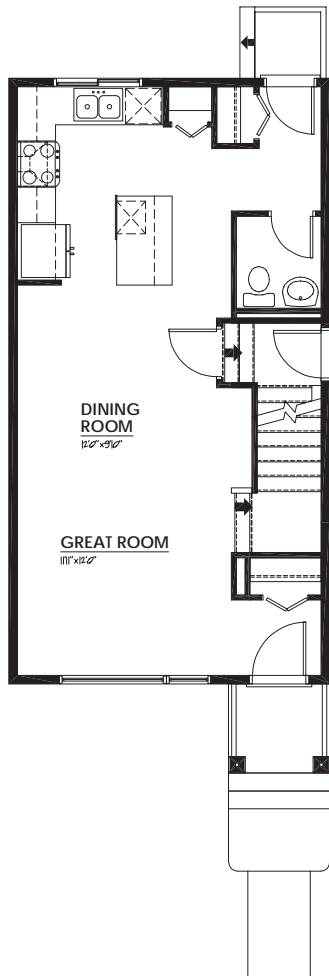


# LIFE READY FOR THE WAY YOU LIVE

**\$20,600**  
IN ENERGY EFFICIENT  
FEATURES INCLUDED!

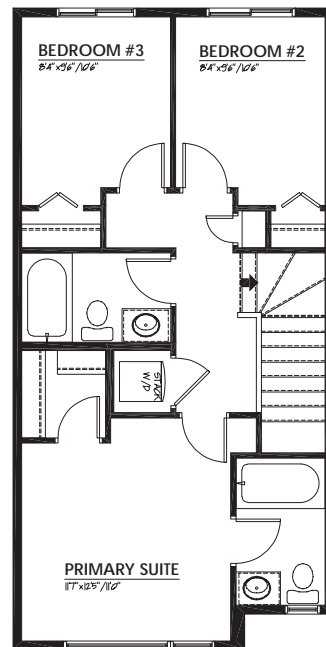
## MAIN FLOOR 612 Sq.Ft.

- Open Concept
- Central Dining Room
- Bright Rear Kitchen with Island Eating Bar
- Convenient Pantry Closet

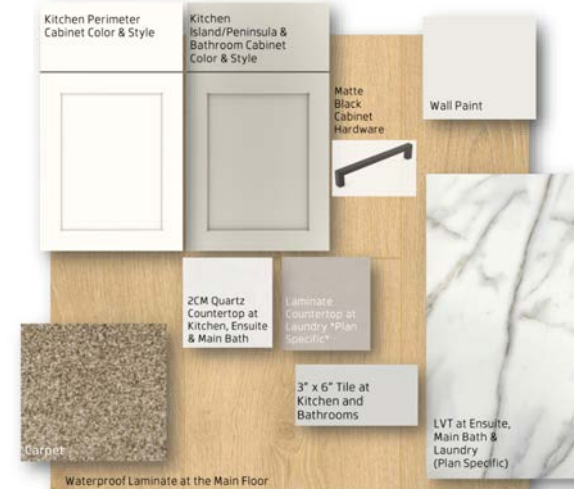


## UPPER FLOOR 638 Sq.Ft.

- Walk-In Closet in Primary Suite
- 3-Piece Primary Ensuite with Window
- Stackable Laundry Closet



## WHITE SATIN ELEVATED COLOUR PALETTE



IT'S EASIER THAN EVER TO  
JOIN THE **JAYMAN FAMILY**



### JayLink by Jayman Realty

Secure the home you really want while Jayman Realty focuses on the sale of your existing home with a JayLink, or Jayman Realty's Resale Equity Action Plan. To simplify your move, Jayman Realty can make the purchase of your new home subject to the sale of your existing home. You will receive 48 hours notice if another party puts an offer on your new home.



### Providing you the absolute **BEST MORTGAGE**

Buying a new home is one of the most important financial decisions you will make. Our mortgage professionals will guide you through the entire process, providing you with expert advice to find the best financing solution for your new Jayman BUILT home.

**DISCOVER YOUR NEXT HOME AT [Jayman.com](https://Jayman.com)**

Reflects 2023 Fit & Finish™ specifications. Renderings and images are representational only. Specifications subject to change without notice. Products and colours may be discontinued or unavailable at time of construction and a substitution required. This document is intended for marketing purposes only and does not constitute part of the purchase agreement. E.&O.E \*Electricity savings do not include administration and other associated fees.