

10 SOLAR PANELS
Save up to 50% on your electricity bills annually*



1,536 Sq.Ft.

 3 Bed

 2.5 Bath

DEVELOPED
LEGAL SUITE
INCLUDED

NEWPORT18

INQUIRE FOR PRICING

99 WOLF HOLLOW RISE SE
CALGARY, AB

L63-012-0060
Elevation WW

**SHOWHOME
AVAILABLE FOR LEASE**

JAYMAN'S STANDARD INCLUSIONS

- Quantum Performance with 10 Solar Panels BuiltGreen Canada standard, with an EnerGuide Rating
- UV-C Ultraviolet Light Air Purification System
- High Efficiency Furnace with Merv 13 Filters & HRV Unit
- Navien-Brand Tankless Hot Water Heater
- Triple Pane Windows
- Smart Home Technology Solutions

ADDITIONAL FEATURES

- Select Fit & Finish™
- Convenient Side Entrance
- Enclosed Main Floor Flex Room
- Vaulted Ceiling in Bonus Room
- Glass Panel Railing at Staircase
- 10' x 10' Rear Deck
- Covered Front Porch
- Developed Legal Suite with Guest Bedroom, 3-Piece Bath, Kitchen, Living Room & Laundry Closet



Renderings and images are representational only.

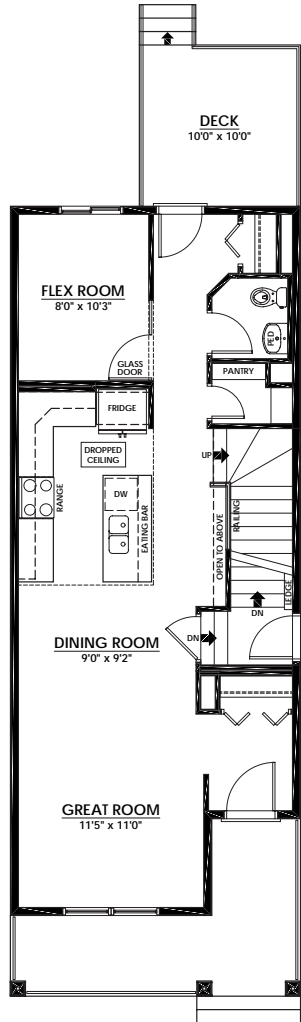
TO VIEW YOUR NEW DREAM HOME, CONTACT:
Trey Peacock, Area Sales Manager
403.474.1277 | wolfwillowlaned@Jayman.com | Jayman.com



LIFE READY FOR THE WAY YOU LIVE

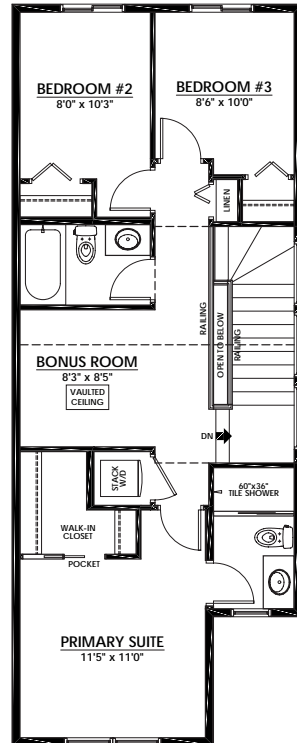
MAIN FLOOR 759 Sq.Ft.

- Expanded Kitchen with Quartz Countertops & Island Eating Bar
- Enclosed Flex Room
- Convenient Walk-In Pantry



UPPER FLOOR 777 Sq.Ft.

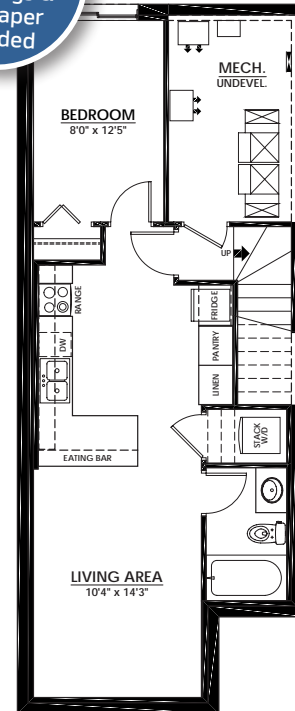
- 3-Piece Primary Ensuite with Window
- Primary Suite Walk-In Closet
- Vaulted Ceiling in Bonus Room
- Laundry Closet



LOWER FLOOR 534 Sq.Ft.

- Developed Legal Suite
- Guest Bedroom & 3-Piece Bath
- Laundry Closet
- Kitchen & Living Room

Air Conditioning, Window Coverings & Wallpaper Included



**LET US
PAY YOUR
MORTGAGE!**

**EARN MONEY
EVERY MONTH**
with the
**SHOWHOME
LEASEBACK
PROGRAM**

Looking to
Invest in
Real Estate?

**Earn 5.5% return
when you lease it
back to us.**

The Jayman BUILT Showhome Leaseback Program allows our customers to purchase a Jayman showhome and earn money every month the showhome is in use.

Ask a Sales Manager to learn more about the program and available opportunities.

DISCOVER YOUR NEXT HOME AT Jayman.com

Reflects 2025 Fit & Finish™ specifications. Specifications subject to change without notice. Renderings and images are representational only. Products and colours may be discontinued or unavailable at time of construction and a substitution required. Floorplans, specifications, windows and dimensions shown are approximate and are subject to change without notice. This document is intended for marketing purposes only and does not constitute part of the purchase agreement. E.&O.E *Electricity savings do not include administration and other associated fees.