

**SOLAR &
SMART TECH
STANDARD**



SOLAR ENERGIZED HYBRID PERFORMANCE HOME

1,648 Sq.Ft.

 **3** Bed

 **2.5** Bath

 **2** Car

**2-CAR
DETACHED
GARAGE**

INQUIRE FOR PRICING

CAPRICE20

103 WOLF HOLLOW RISE SE
CALGARY, AB

L63-012-0061
Elevation WE

**SHOWHOME
AVAILABLE FOR LEASE**

SOLAR ENERGIZED HYBRID INCLUSIONS

- 14 Solar Panels Included
- Triple Pane R-8 Windows with Two Coats Low-E & Dual Argon Gas Fill with Casement
- Daikin FIT Electric Air Source Heat Pump with Natural Gas Backup
- Ultraviolet Air Purification System & Merv 13 Filter
- Tankless Hot Water Heater
- Smart Home Technology Solutions

HYBRID BENEFITS

- \$1,500 in Annual Energy Savings
- 4.2 Metric Tonnes of Greenhouse Gases Saved Per Year
- 60% More Energy Efficient than Minimum Building Code in Alberta Requires
- Highly Efficient Heat Pump Provides Heat and Air Conditioning while Lowering Carbon Emissions.



**EXTRA
FIT & FINISH™**

Renderings and images are representational only.

TO VIEW YOUR NEW DREAM HOME, CONTACT:
Trey Peacock, Area Sales Manager
403.474.1277 | wolfwillowlaned@Jayman.com | Jayman.com



LIFE READY FOR THE WAY YOU LIVE

MAIN FLOOR

815 Sq.Ft.

- 8' x 4' Rear Deck
- Bright Rear Kitchen with Quartz Countertops & Island Eating Bar
- Glass Railing at Dining Room Overlooking Great Room

UPPER FLOOR

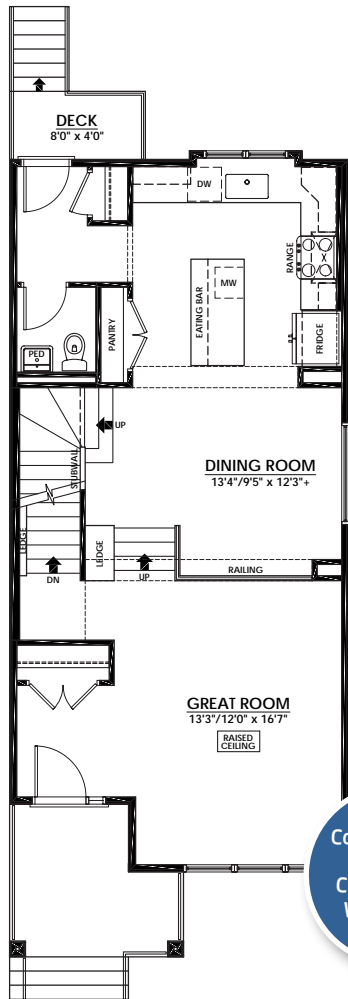
833 Sq.Ft.

- 4-Piece Primary Ensuite with Dual Sinks & Sliding Glass Door Shower
- Primary Suite Walk-In Closet
- Primary Suite Flex Area
- Laundry & Linen Closet

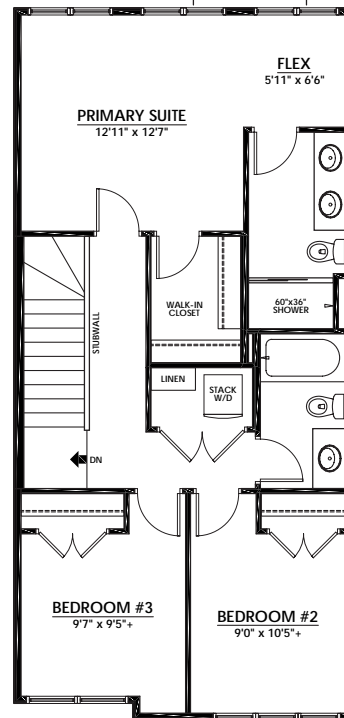
LOWER FLOOR

595 Sq.Ft.

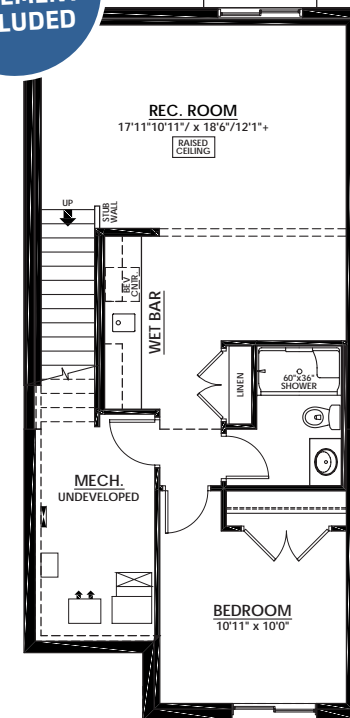
- Guest Bedroom
- 3-Piece Bathroom with Sliding Glass Door Shower
- Large Rec Room with Wet Bar



Air Conditioning, Window Coverings & Wallpaper Included



DEVELOPED BASEMENT INCLUDED



LET US PAY YOUR MORTGAGE!

EARN MONEY EVERY MONTH with the SHOWHOME LEASEBACK PROGRAM

Looking to Invest in Real Estate?

Earn 5.5% return when you lease it back to us.

The Jayman BUILT Showhome Leaseback Program allows our customers to purchase a Jayman showhome and earn money every month the showhome is in use.

Ask a Sales Manager to learn more about the program and available opportunities.

DISCOVER YOUR NEXT HOME AT Jayman.com

Reflects 2025 Fit & Finish™ specifications. Specifications subject to change without notice. Renderings and images are representational only. Products and colours may be discontinued or unavailable at time of construction and a substitution required. Floorplans, specifications, windows and dimensions shown are approximate and are subject to change without notice. This document is intended for marketing purposes only and does not constitute part of the purchase agreement. E.&O.E *Electricity savings do not include administration and other associated fees.