

10 SOLAR PANELS
Save up to 50% on your electricity bills annually*



2,133 Sq.Ft.

 3 Bed

 2.5 Bath

 2 Car

DEVELOPED
LEGAL SUITE
INCLUDED

INQUIRE FOR PRICING

ROCKFORD24

29 WOLF HOLLOW COMMON SE
CALGARY, AB

L64-042-0016
Elevation WB

**SHOWHOME
AVAILABLE FOR LEASE**

JAYMAN'S STANDARD INCLUSIONS

- Quantum Performance with 10 Solar Panels BuiltGreen Canada standard, with an EnerGuide Rating
- UV-C Ultraviolet Light Air Purification System
- High Efficiency Furnace with Merv 13 Filters & HRV Unit
- Navien-Brand Tankless Hot Water Heater
- Triple Pane Windows
- Smart Home Technology Solutions

ADDITIONAL FEATURES

- Extra Fit & Finish™
- Convenient Side Entrance
- Enclosed Main Floor Flex Room
- Great Room Open to Above with Electric Fireplace
- Iron Spindle Railing at Staircase
- 12' x 10' Deck with Sliding Glass Patio Door
- Developed Legal Suite with Guest Bedroom, 3-Piece Bath, Kitchen, Dining & Living Areas



Renderings and images are representational only.

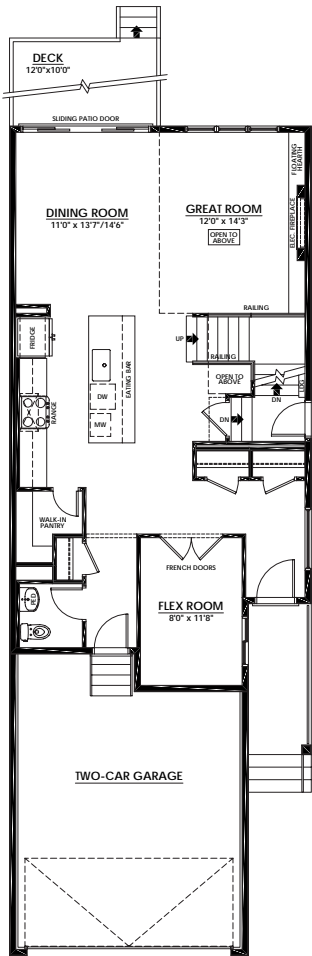
TO VIEW YOUR NEW DREAM HOME, CONTACT:
Christina Caddel, Area Sales Manager
403.775.6063 | wolfwillow@Jayman.com | Jayman.com



LIFE READY FOR THE WAY YOU LIVE

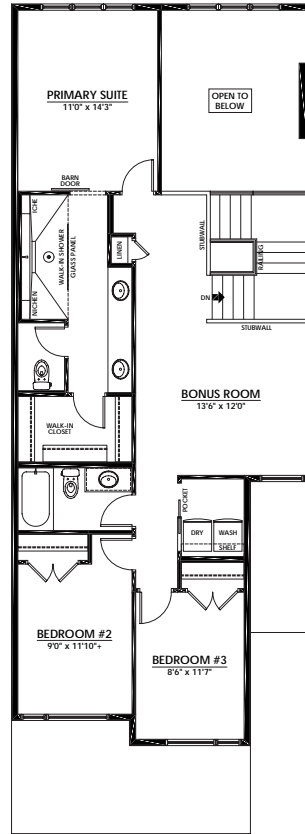
MAIN FLOOR 1,015 Sq.Ft.

- Flex Room Enclosed with French Doors
- Great Room Open to Above with Electric Fireplace
- Central Kitchen with Quartz Countertops, Large Island Eating Bar & Walk-In Pantry



UPPER FLOOR 1,118 Sq.Ft.

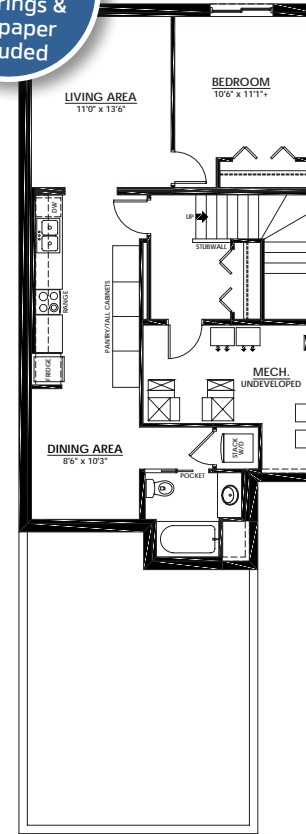
- 4-Piece Primary Ensuite with Dual Sinks & Walk-In Curbless Tiled Shower
- Large Central Bonus Room
- Laundry Room & Linen Closet



LOWER FLOOR 739 Sq.Ft.

- Guest Bedroom
- 3-Piece Bathroom
- Convenient Laundry Closet
- Kitchen, Dining & Living Areas

Air Conditioning, Window Coverings & Wallpaper Included



LET US
PAY YOUR
MORTGAGE!

EARN MONEY
EVERY MONTH
with the
**SHOWHOME
LEASEBACK
PROGRAM**

Looking to
Invest in
Real Estate?

Earn 5.5% return
when you lease it
back to us.

The Jayman BUILT Showhome Leaseback Program allows our customers to purchase a Jayman showhome and earn money every month the showhome is in use.

Ask a Sales Manager to learn more about the program and available opportunities.

DISCOVER YOUR NEXT HOME AT Jayman.com

Reflects 2025 Fit & Finish™ specifications. Specifications subject to change without notice. Renderings and images are representational only. Products and colours may be discontinued or unavailable at time of construction and a substitution required. Floorplans, specifications, windows and dimensions shown are approximate and are subject to change without notice. This document is intended for marketing purposes only and does not constitute part of the purchase agreement. E.&O.E *Electricity savings do not include administration and other associated fees.