

10 SOLAR PANELS
Save up to 50% on your electricity bills annually*



1,789 Sq.Ft.



4 Bed



3 Bath

AVID20

329 AMBLETON DRIVE NW
CALGARY, AB

L71-016-0008
Elevation IE

AVAILABLE HOME

JAYMAN'S STANDARD INCLUSIONS

- Core Performance with 10 Solar Panels
- BuiltGreen Canada standard, with an EnerGuide Rating
- UV-C Ultraviolet Light Air Purification System
- High Efficiency Furnace with Merv 13 Filters & HRV Unit
- Navien-Brand Tankless Hot Water Heater
- Triple Pane Windows
- Smart Home Technology Solutions

INQUIRE FOR PRICING

ADDITIONAL FEATURES

- Extra Fit & Finish™
- Located on a Desirable Corner Lot
- Professionally Designed Down to Earth Colour Palette
- Convenient Side Entrance
- Upgraded Gas Range in Kitchen
- Main Floor Bedroom
- Upper Floor Bonus Room
- 10' x 10' Deck with BBQ Gas Line
- Raised 9' Basement Ceiling Height & 3-Piece Rough-In Plumbing



Renderings and images are representational only.

TO VIEW YOUR NEW DREAM HOME, CONTACT:

Robin MacCullough, Area Sales Manager
403.764.5885 | ambletonlaned@jayman.com | Jayman.com

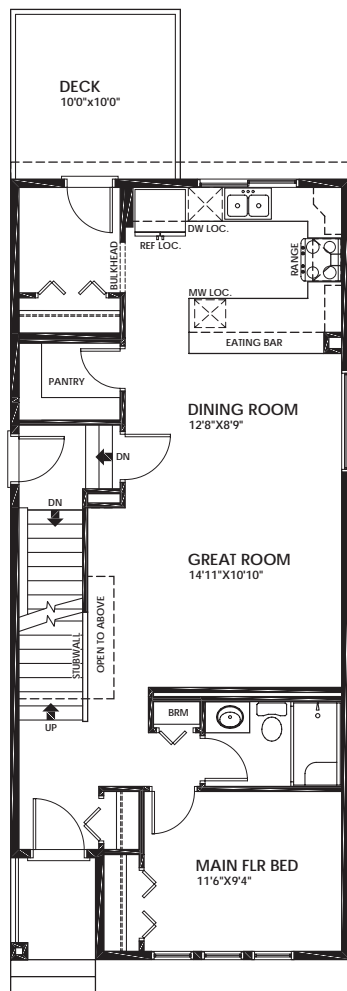


LIFE READY FOR THE WAY YOU LIVE

\$21,000
IN ENERGY EFFICIENT
FEATURES INCLUDED!

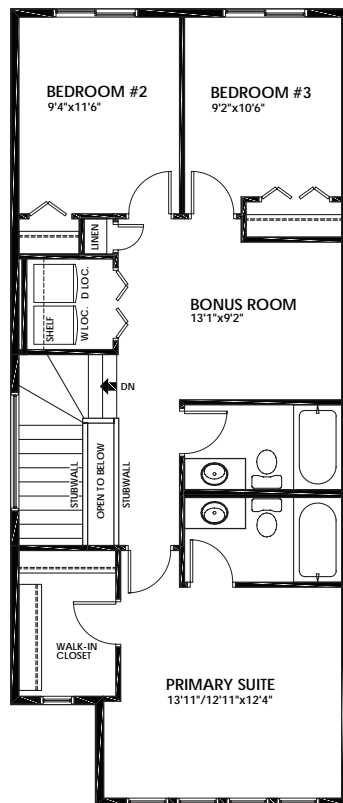
MAIN FLOOR 890 Sq.Ft.

- Bright Rear Kitchen with Eating Bar
- Upgraded Gas Range
- Spacious Walk-In Pantry
- Front Bedroom & 3-Piece Bath with Sliding Glass Door Shower

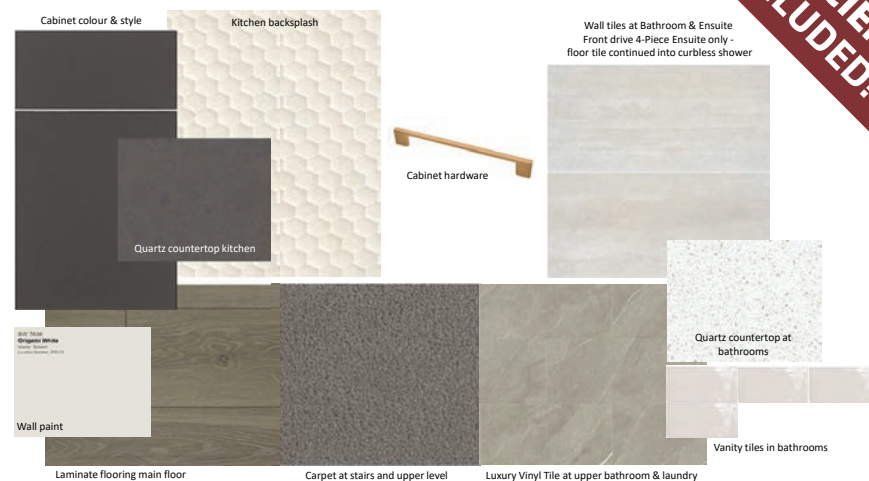


UPPER FLOOR 899 Sq.Ft.

- 3-Piece Primary Ensuite
- Primary Suite Walk-In Closet with Window
- Central Bonus Room
- Laundry & Linen Closets



DOWN TO EARTH COLOUR PALETTE



IT'S EASIER THAN EVER TO
JOIN THE **JAYMAN FAMILY**



JayLink by Jayman Realty

Secure the home you really want while Jayman Realty focuses on the sale of your existing home with a JayLink, or Jayman Realty's Resale Equity Action Plan. To simplify your move, Jayman Realty can make the purchase of your new home subject to the sale of your existing home. You will receive 48 hours notice if another party puts an offer on your new home.



Providing you the absolute **BEST MORTGAGE**

Buying a new home is one of the most important financial decisions you will make. Our mortgage professionals will guide you through the entire process, providing you with expert advice to find the best financing solution for your new Jayman BUILT home.

DISCOVER YOUR NEXT HOME AT Jayman.com

Reflects 2024 Fit & Finish™ specifications. Renderings and images are representational only. Specifications subject to change without notice. Products and colours may be discontinued or unavailable at time of construction and a substitution required. This document is intended for marketing purposes only and does not constitute part of the purchase agreement. E.&O.E *Electricity savings do not include administration and other associated fees. Build time estimated from the date of the firm sale.