

10 SOLAR PANELS
Save up to 50% on your electricity bills annually*

1,478 Sq.Ft.

 **3** Bed

 **2.5** Bath

 **2** Car

DEVELOPED
BASEMENT
INCLUDED

INQUIRE FOR PRICING

EDWARD18

28 BARTLETT WAY SE
CALGARY, AB

L72-032-0006
Elevation YF

**SHOWHOME
AVAILABLE FOR LEASE**

JAYMAN'S STANDARD INCLUSIONS

- Core Performance with 10 Solar Panels
- BuiltGreen Canada standard, with an EnerGuide Rating
- UV-C Ultraviolet Light Air Purification System
- High Efficiency Furnace with Merv 13 Filters & HRV Unit
- Navien-Brand Tankless Hot Water Heater
- Triple Pane Windows
- Smart Home Technology Solutions

ADDITIONAL FEATURES

- Extra Fit & Finish™
- Includes 2-Car Detached Garage
- Electric Fireplace in Great Room
- Main Floor Flex Area with Pet Den
- Upper Floor Open to Below
- Quartz Countertops in Kitchen & Bathrooms
- Iron Spindle Railing Added to Stairs
- 9' x 4' Rear Deck
- Developed Basement with Bedroom, 3-Piece Bath, Theatre & Wet Bar



Renderings and images are representational only.

TO VIEW YOUR NEW DREAM HOME, CONTACT:

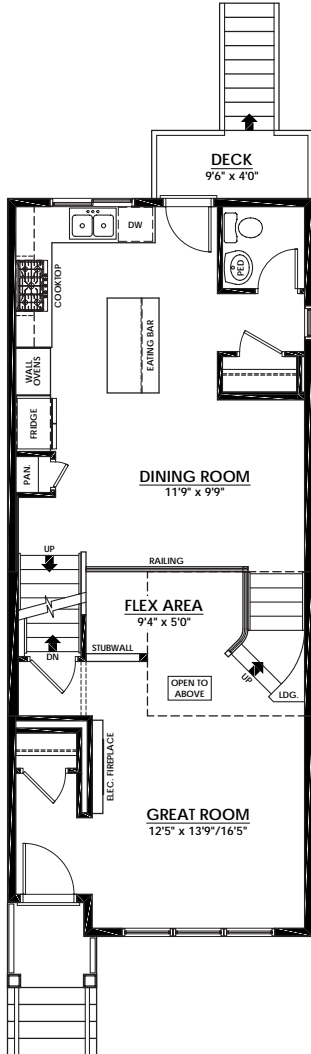
Clare Nicolson, Area Sales Manager
403.980.0558 | rangeview@jayman.com | Jayman.com

**Jayman
BUILT**

LIFE READY FOR THE WAY YOU LIVE

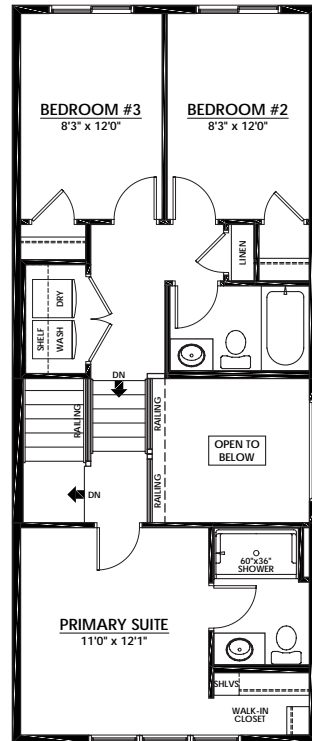
MAIN FLOOR 774 Sq.Ft.

- Bright Front Great Room with Electric Fireplace
- Flex Area with Pet Den
- Rear Kitchen with Island Eating Bar & Built-In KitchenAid Appliances



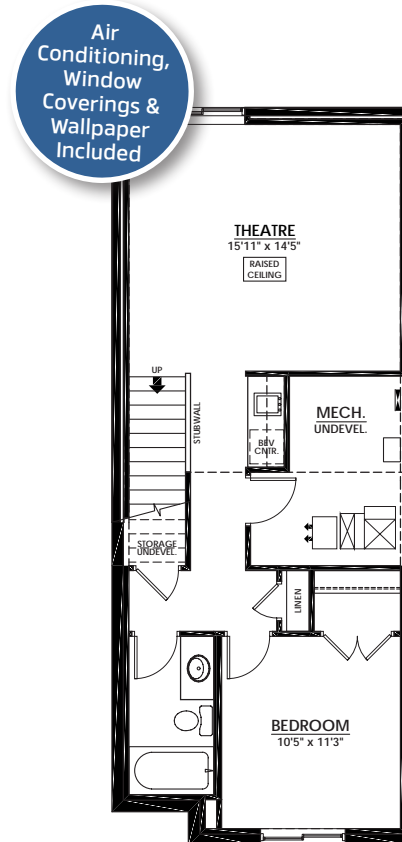
UPPER FLOOR 704 Sq.Ft.

- 3-Piece Primary Ensuite with Sliding Glass Door Shower
- Open to Below Feature
- Laundry & Linen Closets



LOWER FLOOR 564 Sq.Ft.

- Guest Bedroom
- 3-Piece Bath
- Theatre & Wet Bar



**LET US
PAY YOUR
MORTGAGE!**

**EARN MONEY
EVERY MONTH
with the
SHOWHOME
LEASEBACK
PROGRAM**

**Looking to
Invest in
Real Estate?**

**Earn 5.5% return
when you lease it
back to us.**

The Jayman BUILT Showhome Leaseback Program allows our customers to purchase a Jayman showhome and earn money every month the showhome is in use.

Ask a Sales Manager to learn more about the program and available opportunities.

DISCOVER YOUR NEXT HOME AT Jayman.com

Reflects 2025 Fit & Finish™ specifications. Specifications subject to change without notice. Renderings and images are representational only. Products and colours may be discontinued or unavailable at time of construction and a substitution required. Floorplans, specifications, windows and dimensions shown are approximate and are subject to change without notice. This document is intended for marketing purposes only and does not constitute part of the purchase agreement. E.&O.E *Electricity savings do not include administration and other associated fees.