

10 SOLAR PANELS
Save up to 50% on your electricity bills annually*



2,341 Sq.Ft.



4 Bed



3 Bath



2 Car

KARMA24

276 EDITH PLACE NW
CALGARY, AB

L76-020-0018
Elevation GC

AVAILABLE HOME

JAYMAN'S STANDARD INCLUSIONS

- Core Performance with 10 Solar Panels
- BuiltGreen Canada standard, with an EnerGuide Rating
- UV-C Ultraviolet Light Air Purification System
- High Efficiency Furnace with Merv 13 Filters & HRV Unit
- Navien-Brand Tankless Hot Water Heater
- Triple Pane Windows
- Smart Home Technology Solutions

INQUIRE FOR PRICING

ADDITIONAL FEATURES

- Extra Fit & Finish™
- Professionally Designed Magnolia Charm Colour Palette
- Convenient Side Entrance
- Main Floor Bedroom & 3-Piece Bath
- Electric Fireplace in Great Room
- Expanded Dining Room, Primary Suite & Secondary Bedrooms
- Iron Spindle Railing Added to Stairs
- Raised 9' Basement Ceiling Height & 3-Piece Rough-In Plumbing



Renderings and images are representational only.

TO VIEW YOUR NEW DREAM HOME, CONTACT:

Heather Clifford, Area Sales Manager
403.454.6007 | glacierreidge@Jayman.com | Jayman.com

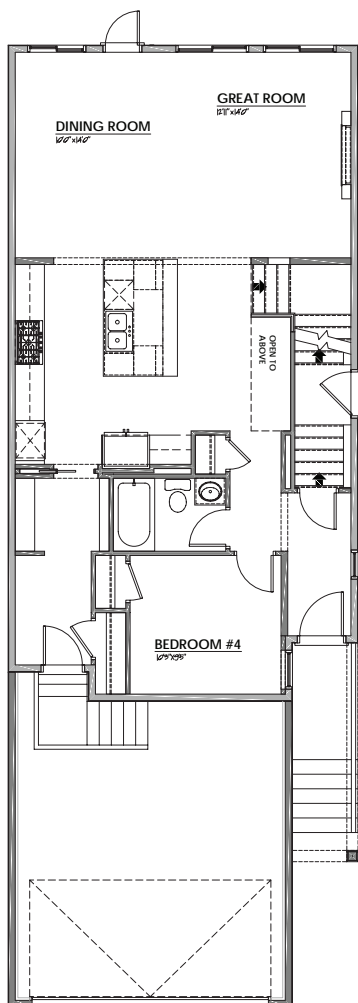


LIFE READY FOR THE WAY YOU LIVE

\$21,000
IN ENERGY EFFICIENT
FEATURES INCLUDED!

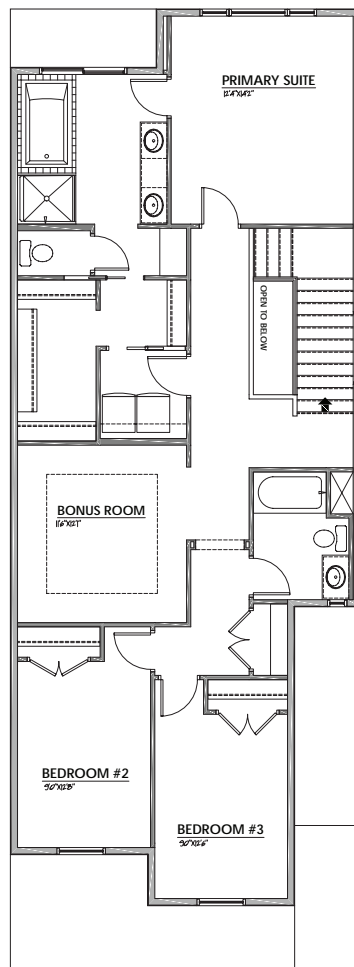
MAIN FLOOR 1,051 Sq.Ft.

- Central Kitchen with Built-In KitchenAid Appliances & Island Eating Bar
- Convenient Walk-Thru Pantry
- Expanded Dining Room
- Electric Fireplace in Great Room
- Front Bedroom & 3-Piece Bath



UPPER FLOOR 1,290 Sq.Ft.

- Expanded Primary Suite & Secondary Bedrooms
- 5-Piece Primary Ensuite with Walk-Thru Closet to Laundry Room
- Large Central Bonus Room



MAGNOLIA CHARM COLOUR PALETTE



IT'S EASIER THAN EVER TO
JOIN THE **JAYMAN FAMILY**



JayLink by Jayman Realty

Secure the home you really want while Jayman Realty focuses on the sale of your existing home with a JayLink, or Jayman Realty's Resale Equity Action Plan. To simplify your move, Jayman Realty can make the purchase of your new home subject to the sale of your existing home. You will receive 48 hours notice if another party puts an offer on your new home.



Providing you the absolute **BEST MORTGAGE**

Buying a new home is one of the most important financial decisions you will make. Our mortgage professionals will guide you through the entire process, providing you with expert advice to find the best financing solution for your new Jayman BUILT home.

DISCOVER YOUR NEXT HOME AT Jayman.com

Reflects 2024 Fit & Finish™ specifications. Specifications subject to change without notice. Renderings and images are representational only. Products and colours may be discontinued or unavailable at time of construction and a substitution required. Floorplans, specifications, windows and dimensions shown are approximate and are subject to change without notice. This document is intended for marketing purposes only and does not constitute part of the purchase agreement. E.&O.E. *Electricity savings do not include administration and other associated fees.