

10 SOLAR PANELS  
Save up to 50% on your electricity bills annually\*



**1,980** Sq.Ft.



**4** Bed



**3** Bath



**2** Car

# EMMA24

264 EDITH PLACE NW  
CALGARY, AB

L76-020-0021  
Elevation LA

**AVAILABLE HOME**

## JAYMAN'S STANDARD INCLUSIONS

- Core Performance with 10 Solar Panels
- BuiltGreen Canada standard, with an EnerGuide Rating
- UV-C Ultraviolet Light Air Purification System
- High Efficiency Furnace with Merv 13 Filters & HRV Unit
- Navien-Brand Tankless Hot Water Heater
- Triple Pane Windows
- Smart Home Technology Solutions

## ADDITIONAL FEATURES

- Extra Fit & Finish™
- Professionally Designed Ebony Oasis Colour Palette
- Central Kitchen with Gas Range & Island Eating Bar
- Main Floor Bedroom & 3-Piece Bath with Sliding Glass Door Shower
- 5-Piece Primary Ensuite with Dual Sinks, Tub & Curbless Tiled Shower
- Expanded Dining Room
- 11' x 10' Rear Deck with BBQ Gas Line



Renderings and images are representational only.

**TO VIEW YOUR NEW DREAM HOME, CONTACT:**

Heather Clifford, Area Sales Manager  
403.454.6007 | glacierridge@Jayman.com | Jayman.com



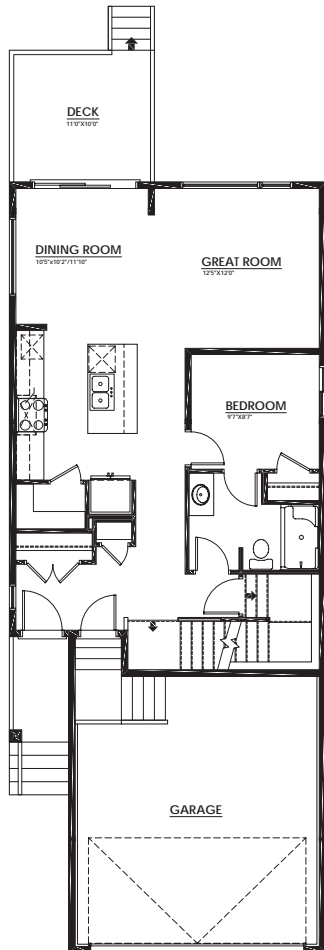
# LIFE READY FOR THE WAY YOU LIVE

**\$21,000**  
IN ENERGY EFFICIENT  
FEATURES INCLUDED!

## MAIN FLOOR

875 Sq.Ft.

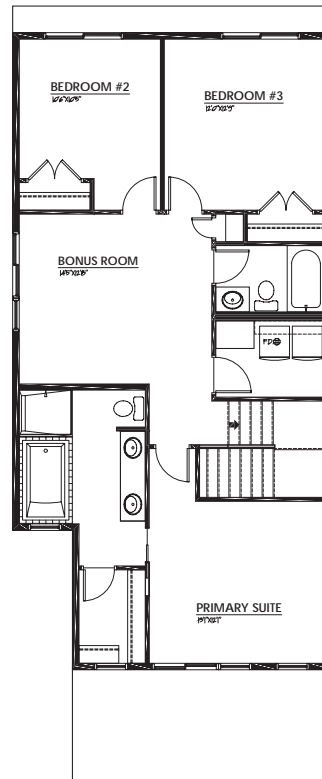
- Central Kitchen with Gas Range & Island Eating Bar
- Bedroom & 3-Piece Bath with Sliding Glass Door Shower
- Expanded Dining Room



## UPPER FLOOR

1,105 Sq.Ft.

- 5-Piece Primary Ensuite with Dual Sinks, Tub & Curbless Tiled Shower
- Spacious Central Bonus Room
- Laundry Room



## EBONY OASIS COLOUR PALETTE

Cabinet - Black combined with dark brown woodgrain



Kitchen Wall Tile  
(off-white glossy tile with shade variations horizontal 50/50 bricklay)



Cabinet Hardware



Bathroom Wall Tile  
(black glossy tile with white and warm toned veins)

Front Drive Ensuite 4-Piece only - Matte version floor tile & curbless shower tile



Wall Paint

Luxury Vinyl Planks at main floor, bathrooms, & laundry

Carpet at stairs & upper level

Granite countertop at kitchen & bathrooms

IT'S EASIER THAN EVER TO  
JOIN THE **JAYMAN FAMILY**



### JayLink by Jayman Realty

Secure the home you really want while Jayman Realty focuses on the sale of your existing home with a JayLink, or Jayman Realty's Resale Equity Action Plan. To simplify your move, Jayman Realty can make the purchase of your new home subject to the sale of your existing home. You will receive 48 hours notice if another party puts an offer on your new home.



### Providing you the absolute BEST MORTGAGE

Buying a new home is one of the most important financial decisions you will make. Our mortgage professionals will guide you through the entire process, providing you with expert advice to find the best financing solution for your new Jayman BUILT home.

DISCOVER YOUR NEXT HOME AT [Jayman.com](https://Jayman.com)

Reflects 2025 Fit & Finish™ specifications. Specifications subject to change without notice. Renderings and images are representational only. Products and colours may be discontinued or unavailable at time of construction and a substitution required. Floorplans, specifications, windows and dimensions shown are approximate and are subject to change without notice. This document is intended for marketing purposes only and does not constitute part of the purchase agreement. E.&O.E \*Electricity savings do not include administration and other associated fees.