

10
SOLAR
PANELS
Save up to 50% on your
electricity bills annually*

1,771 Sq.Ft.

 **3** Bed

 **2.5** Bath

JASPER24

128 MITCHELL WALK NW
CALGARY, AB

L77-022-0038
Elevation GE

AVAILABLE HOME

JAYMAN'S STANDARD INCLUSIONS

- Core Performance with 10 Solar Panels
- BuiltGreen Canada standard, with an EnerGuide Rating
- UV-C Ultraviolet Light Air Purification System
- High Efficiency Furnace with Merv 13 Filters & HRV Unit
- Navien-Brand Tankless Hot Water Heater
- Triple Pane Windows
- Smart Home Technology Solutions

INQUIRE FOR PRICING

ADDITIONAL FEATURES

- Extra Fit & Finish™
- Professionally Designed Oak & Ore Colour Palette
- Convenient Side Entrance
- Includes 8' x 4' Rear Deck
- Raised Basement Ceiling Height & 3-Piece Rough-In Plumbing
- Park-Facing Covered Front Porch
- Fully Landscaped Front Yard
- Double Side Yard



Renderings and images are representational only.

GLACIER RIDGE PARK FRONT HOMES
Sandra McDonald, Area Sales Manager
178 & 182 Mitchell Road NW
403.855.1144 | glacierridgelaned@Jayman.com

**Jayman**
BUILT

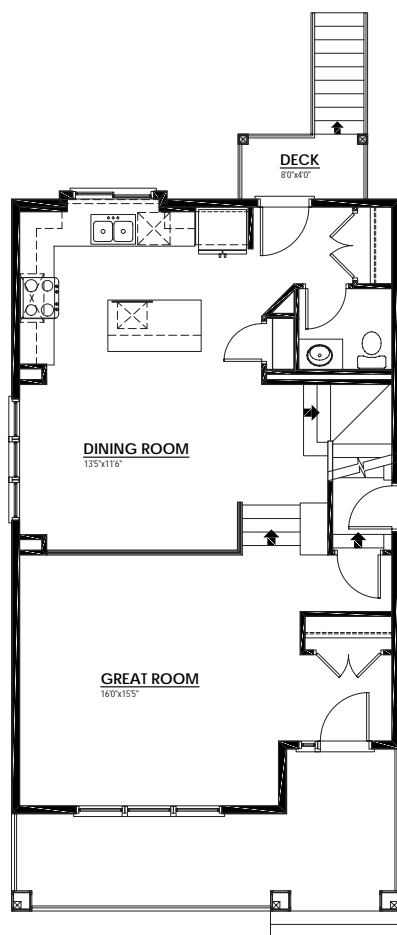
LIFE READY FOR THE WAY YOU LIVE

\$21,000
IN ENERGY EFFICIENT
FEATURES INCLUDED!

MAIN FLOOR

887 Sq.Ft.

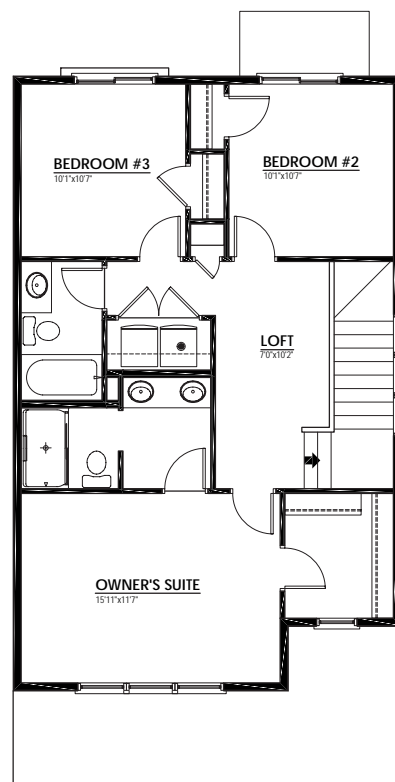
- Stunning Split-Level Design
- Iron Spindle Railing at Dining Room Overlooking Great Room
- Bright Rear Kitchen with Island Eating Bar
- Stainless Steel Appliances with Modern Flat Wood Hood Fan Shroud



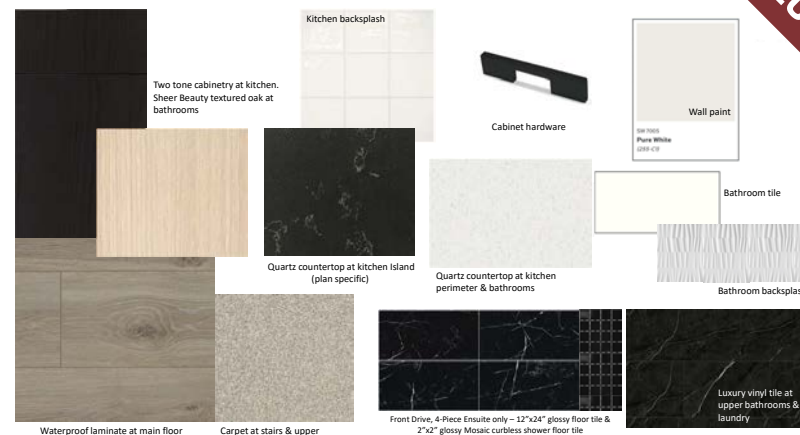
UPPER FLOOR

884 Sq.Ft.

- 4-Piece Primary Ensuite with Dual Sinks & Sliding Glass Door Shower
- Primary Suite Walk-In Closet with Window
- Central Loft Area
- Laundry & Linen Closets



OAK & ORE COLOUR PALETTE



IT'S EASIER THAN EVER TO
JOIN THE **JAYMAN FAMILY**



JayLink by Jayman Realty

Secure the home you really want while Jayman Realty focuses on the sale of your existing home with a JayLink, or Jayman Realty's Resale Equity Action Plan. To simplify your move, Jayman Realty can make the purchase of your new home subject to the sale of your existing home. You will receive 48 hours notice if another party puts an offer on your new home.



Providing you the absolute BEST MORTGAGE

Buying a new home is one of the most important financial decisions you will make. Our mortgage professionals will guide you through the entire process, providing you with expert advice to find the best financing solution for your new Jayman BUILT home.

DISCOVER YOUR NEXT HOME AT Jayman.com

Reflects 2024 Fit & Finish™ specifications. Renderings and images are representational only. Specifications subject to change without notice. Products and colours may be discontinued or unavailable at time of construction and a substitution required. This document is intended for marketing purposes only and does not constitute part of the purchase agreement. E.&O.E *Electricity savings do not include administration and other associated fees.