

10 SOLAR PANELS
Save up to 50% on your electricity bills annually*



1,384 Sq.Ft.

 1 Bed

 1.5 Bath

Basement
Development
Included

WATERTON²⁴

INQUIRE FOR PRICING

116 MITCHELL WALK NW
CALGARY, AB

L77-022-0041
Elevation GJ

JAYMAN'S STANDARD INCLUSIONS

- Quantum Performance with 10 Solar Panels
- BuiltGreen Canada standard, with an EnerGuide Rating
- UV-C Ultraviolet Light Air Purification System
- High Efficiency Furnace with Merv 13 Filters & HRV Unit
- Navien-Brand Tankless Hot Water Heater
- Triple Pane Windows
- Smart Home Technology Solutions

ADDITIONAL FEATURES

- Extra Fit & Finish™
- Professionally Designed Oak & Ore Colour Palette
- Vaulted Ceilings in Kitchen, Dining Room, Great Room, Primary Suite & Flex Room
- Developed Basement with Two Guest Bedrooms, 3-Piece Bath & Rec Room
- Rear Deck with Stairs to Backyard
- Park-Facing Covered Front Porch
- Fully Landscaped Front Yard
- Double Side Yard

AVAILABLE HOME



Renderings and images are representational only.

GLACIER RIDGE PARK FRONT HOMES
Sandra McDonald, Area Sales Manager
403.855.1144 | glacierridgelaned@Jayman.com

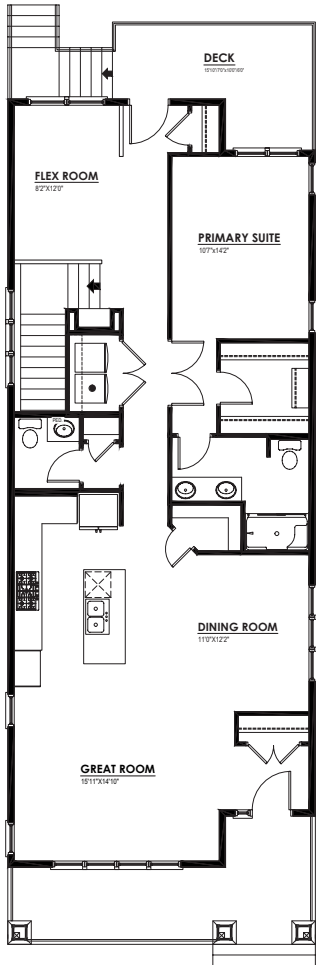
**Jayman**
BUILT

LIFE READY FOR THE WAY YOU LIVE

\$21,000
IN ENERGY EFFICIENT
FEATURES INCLUDED!

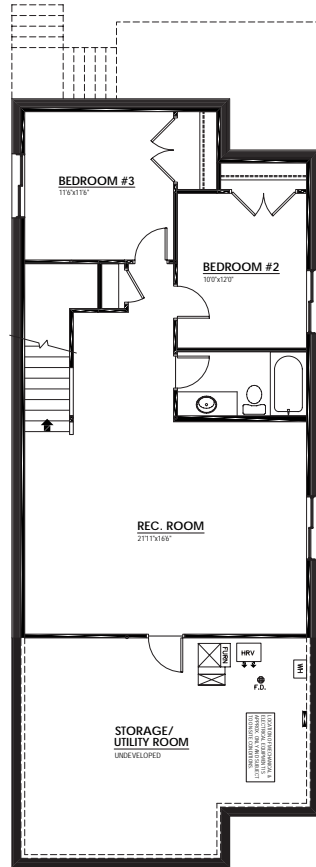
MAIN FLOOR 1,384 Sq.Ft.

- Built-In KitchenAid Appliances with Gas Cooktop & Modern Flat Wood Hood Fan Shroud
- 4-Piece Primary Ensuite with Dual Sinks & Sliding Glass Door Shower
- Rear Flex Room



LOWER FLOOR 853 Sq.Ft.

- Two Guest Bedrooms
- 3-Piece Bathroom
- Spacious Rec Room



OAK & ORE COLOUR PALETTE



IT'S EASIER THAN EVER TO
JOIN THE **JAYMAN FAMILY**



JayLink by Jayman Realty

Secure the home you really want while Jayman Realty focuses on the sale of your existing home with a JayLink, or Jayman Realty's Resale Equity Action Plan. To simplify your move, Jayman Realty can make the purchase of your new home subject to the sale of your existing home. You will receive 48 hours notice if another party puts an offer on your new home.



Providing you the absolute BEST MORTGAGE

Buying a new home is one of the most important financial decisions you will make. Our mortgage professionals will guide you through the entire process, providing you with expert advice to find the best financing solution for your new Jayman BUILT home.

DISCOVER YOUR NEXT HOME AT [Jayman.com](https://www.jayman.com)

Reflects 2024 Fit & Finish™ specifications. Renderings and images are representational only. Specifications subject to change without notice. Products and colours may be discontinued or unavailable at time of construction and a substitution required. This document is intended for marketing purposes only and does not constitute part of the purchase agreement. E.&O.E *Electricity savings do not include administration and other associated fees.