

**10 SOLAR PANELS**  
Save up to 50% on your electricity bills annually\*

**1,652** Sq.Ft.

 **3** Bed

 **2.5** Bath

# SONATA20

140 ANNETTE VILLAS NW  
CALGARY, AB

L77-031-0010  
Elevation TZ

**AVAILABLE HOME**

## JAYMAN'S STANDARD INCLUSIONS

- Core Performance with 10 Solar Panels
- BuiltGreen Canada standard, with an EnerGuide Rating
- UV-C Ultraviolet Light Air Purification System
- High Efficiency Furnace with Merv 13 Filters & HRV Unit
- Navien-Brand Tankless Hot Water Heater
- Triple Pane Windows
- Smart Home Technology Solutions

## INQUIRE FOR PRICING

## ADDITIONAL FEATURES

- Extra Fit & Finish™
- Professionally Designed Magnolia Charm Colour Palette
- Convenient Side Entrance
- Stunning Split-Level Design
- Iron Spindle Railing at Dining Room Overlooking Great Room
- 11' Ceiling Height in Great Room
- 3-Piece Primary Ensuite with Sliding Glass Door Shower
- 10' x 10' Rear Deck



Renderings and images are representational only.

**TO VIEW YOUR NEW DREAM HOME, CONTACT:**

Sandra McDonald, Area Sales Manager  
403.855.1144 | glacierridgelaned@Jayman.com | Jayman.com

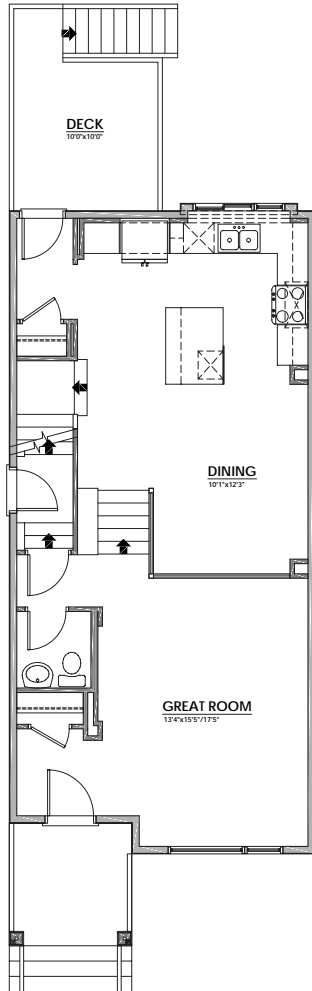


# LIFE READY FOR THE WAY YOU LIVE

## MAIN FLOOR

828 Sq.Ft.

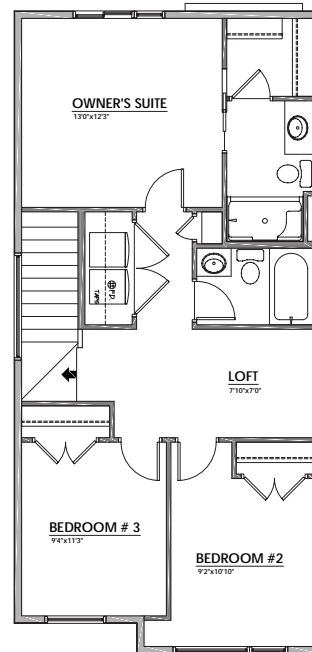
- Stunning Split-Level Design
- Bright Rear Kitchen with Island Eating Bar
- Iron Spindle Railing at Dining Room Overlooking Great Room



## UPPER FLOOR

824 Sq.Ft.

- Primary Suite Walk-In Closet & 3-Piece Ensuite with Sliding Glass Door Shower
- Central Loft Area
- Laundry & Linen Closets



## MAGNOLIA CHARM COLOUR PALETTE



IT'S EASIER THAN EVER TO  
JOIN THE **JAYMAN FAMILY**



### JayLink by Jayman Realty

Secure the home you really want while Jayman Realty focuses on the sale of your existing home with a JayLink, or Jayman Realty's Resale Equity Action Plan. To simplify your move, Jayman Realty can make the purchase of your new home subject to the sale of your existing home. You will receive 48 hours notice if another party puts an offer on your new home.



### Providing you the absolute **BEST MORTGAGE**

Buying a new home is one of the most important financial decisions you will make. Our mortgage professionals will guide you through the entire process, providing you with expert advice to find the best financing solution for your new Jayman BUILT home.

**DISCOVER YOUR NEXT HOME AT [Jayman.com](https://Jayman.com)**

Reflects 2025 Fit & Finish™ specifications. Specifications subject to change without notice. Renderings and images are representational only. Products and colours may be discontinued or unavailable at time of construction and a substitution required. Floorplans, specifications, windows and dimensions shown are approximate and are subject to change without notice. This document is intended for marketing purposes only and does not constitute part of the purchase agreement. E.&O.E \*Electricity savings do not include administration and other associated fees.

**\$21,000  
IN ENERGY EFFICIENT  
FEATURES INCLUDED!**