

Save up to 50% on your electricity bills annually*
8 SOLAR PANELS



1,809 Sq.Ft.

 **4** Bed

 **3** Bath

 **2** Car

**DEVELOPED
LEGAL SUITE
INCLUDED**

AVID20

8 AMBLESTONE CRES. NW
CALGARY, AB

L82-001-0037
Elevation TX

**SHOWHOME
AVAILABLE FOR LEASE**

JAYMAN'S STANDARD INCLUSIONS

- 8 500-Watt Solar Panels
- Quantum Performance™ Wall System Powered by BTRboard
- High-Efficiency Furnace with Merv 13 Filter & HRV System
- Ultraviolet Light Air Purification System
- Tankless Hot Water Heater
- Foundation Wrap to Help Repel Water
- Triple Pane R-6 Windows
- Smart Home Technology Package
- BuiltGreen Canada Certified

ADDITIONAL FEATURES

- Extra Fit & Finish™
- Convenient Side Entrance
- Electric Fireplace in Great Room
- Main Floor Bedroom & 3-Piece Bath with Sliding Glass Door Shower
- Rear 10' x 10' Deck
- Quartz Counterops Throughout
- Upper Floor Bonus Room with Vaulted Ceiling
- Developed 2-Bedroom Legal Suite with 3-Piece Bath, Kitchen & Living Room



**2-CAR
DETACHED
GARAGE**

Renderings and images are representational only.

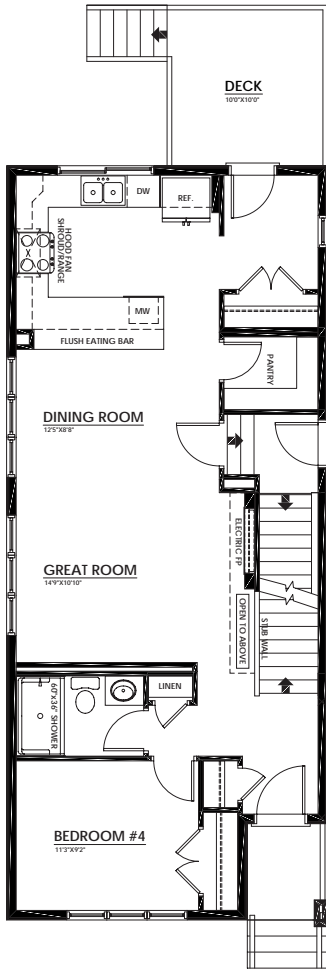
TO VIEW YOUR NEW DREAM HOME, CONTACT:
Robin MacCullough, Area Sales Manager
587.441.5902 | ambleridge@jayman.com | Jayman.com



LIFE READY FOR THE WAY YOU LIVE

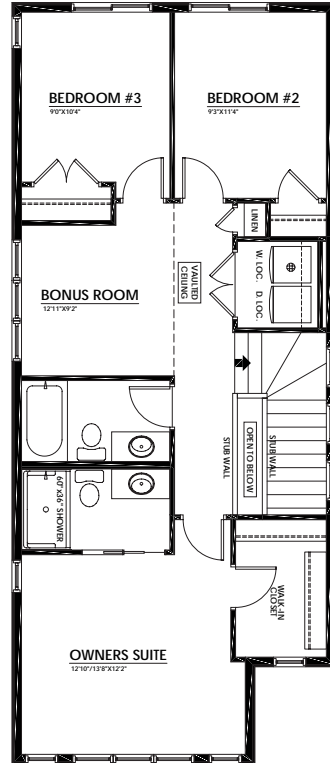
MAIN FLOOR 910 Sq.Ft.

- Electric Fireplace in Great Room
- Front Bedroom & 3-Piece Bath with Sliding Glass Door Shower
- Bright Rear Kitchen with Eating Bar



UPPER FLOOR 899 Sq.Ft.

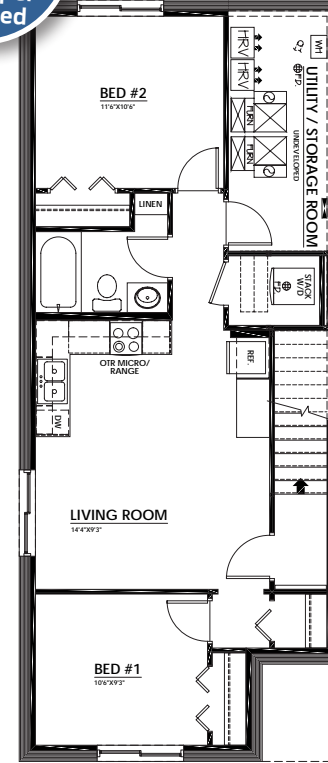
- 3-Piece Primary Ensuite with Sliding Glass Door Shower
- Primary Suite Walk-In Closet
- Bonus Room with Vaulted Ceiling
- Laundry & Linen Closets



LOWER FLOOR 691 Sq.Ft.

- 2-Bedroom Legal Suite with 3-Piece Bath, Kitchen, Living Room & Stackable Laundry Closet

Air Conditioning, Window Coverings & Wallpaper Included



LET US
PAY YOUR
MORTGAGE!

EARN MONEY
EVERY MONTH
with the
SHOWHOME
LEASEBACK
PROGRAM

Looking to
Invest in
Real Estate?

Earn 6% return
when you lease it
back to us.

The Jayman BUILT Showhome Leaseback Program allows our customers to purchase a Jayman showhome and earn money every month the showhome is in use.

Ask a Sales Manager to learn more about the program and available opportunities.

DISCOVER YOUR NEXT HOME AT Jayman.com

Reflects 2026 Fit & Finish™ specifications. Specifications subject to change without notice. Renderings and images are representational only. Products and colours may be discontinued or unavailable at time of construction and a substitution required. Floorplans, specifications, windows and dimensions shown are approximate and are subject to change without notice. This document is intended for marketing purposes only and does not constitute part of the purchase agreement. E.&O.E *Electricity savings do not include administration and other associated fees.