

Save up to 50% on your electricity bills annually*

10 SOLAR PANELS

1,652 Sq.Ft.



3 Bed



2.5 Bath

SONATA20

INQUIRE FOR PRICING

19225 22A AVENUE NW
EDMONTON, AB

Q50-005-0042
Elevation TC

AVAILABLE HOME

JAYMAN'S STANDARD INCLUSIONS

- Core Performance with 10 Solar Panels
- BuiltGreen Canada standard, with an EnerGuide Rating
- UV-C Ultraviolet Light Air Purification System
- High Efficiency Furnace with Merv 13 Filters & HRV Unit
- Navien-Brand Tankless Hot Water Heater
- Triple Pane Windows
- Smart Home Technology Solutions

ADDITIONAL FEATURES

- Extra FIT & FINISH™
- Kingston Elevated Colour Palette
- Stainless Steel Kitchen Appliances
- Quartz Kitchen Countertops
- Waterproof Laminate Flooring
- Corner Lot Treatment
- Alternative Foundation
- Basement Development includes 4th Bedroom with Walk-In Closet, Full Bath & Rec Room (adds 614 Sq.Ft.)



Renderings and images are representational only.

TO VIEW YOUR NEW DREAM HOME, CONTACT:

Mike Marsh, River's Edge

780.670.0184 | RiversEdgeYEG@Jayman.com | Jayman.com

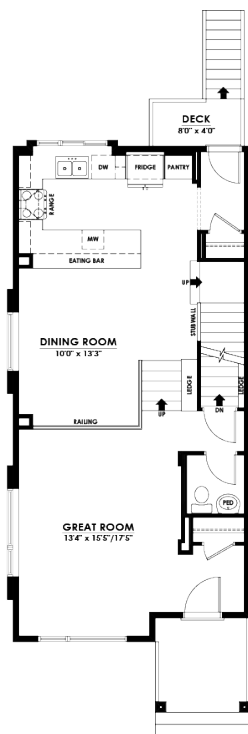


LIFE READY FOR THE WAY YOU LIVE

\$20,600
IN ENERGY EFFICIENT
FEATURES INCLUDED!

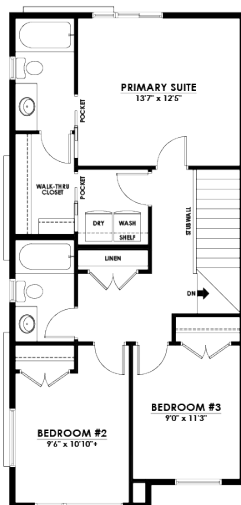
MAIN FLOOR 828 Sq.Ft.

- Open Concept Split Level
- Bright Rear Kitchen with Eating Bar
- Spindle Railing at Dining Room
- 11' Ceiling in Great Room



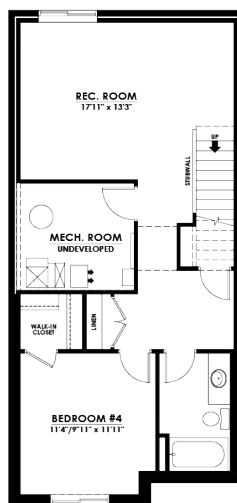
UPPER FLOOR 824 Sq.Ft.

- 3-Piece Primary Ensuite with Window
- Primary Suite Walk-In Closet to Walk-Thru Laundry Room
- Spacious Hallway Linen Closet

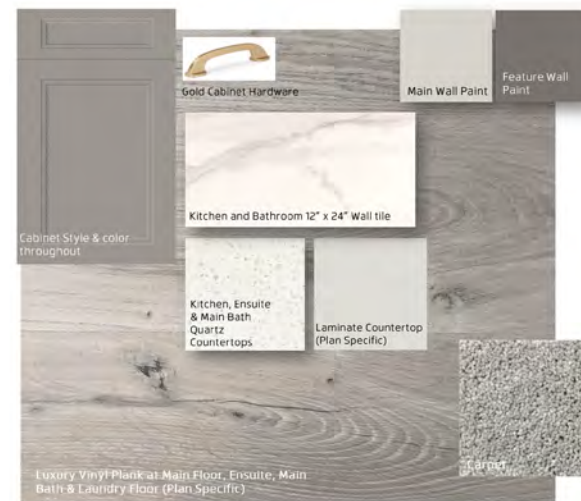


DEVEL BASEMENT 614 Sq.Ft.

- 4th Bedroom with Walk-In Closet
- Full Bath
- Rec Room



KINGSTON ELEVATED COLOUR PALETTE



IT'S EASIER THAN EVER TO
JOIN THE **JAYMAN FAMILY**



JayLink by Jayman Realty

Secure the home you really want while Jayman Realty focuses on the sale of your existing home with a JayLink, or Jayman Realty's Resale Equity Action Plan. To simplify your move, Jayman Realty can make the purchase of your new home subject to the sale of your existing home. You will receive 48 hours notice if another party puts an offer on your new home.



Providing you the absolute BEST MORTGAGE

Buying a new home is one of the most important financial decisions you will make. Our mortgage professionals will guide you through the entire process, providing you with expert advice to find the best financing solution for your new Jayman BUILT home.

DISCOVER YOUR NEXT HOME AT [Jayman.com](https://www.jayman.com)

Reflects 2023 Fit & Finish™ specifications. Renderings and images are representational only. Specifications subject to change without notice. Products and colours may be discontinued or unavailable at time of construction and a substitution required. This document is intended for marketing purposes only and does not constitute part of the purchase agreement. E.&O.E *Electricity savings do not include administration and other associated fees.