

10 SOLAR PANELS  
Save up to 50% on your electricity bills annually\*



**1,250** Sq.Ft.

 **3** Bed

 **2.5** Bath

 **2** Car

# BRADY18

**INQUIRE FOR PRICING**

130 STILES LINK  
LEDUC, AB

Q87-023-0011  
Elevation B

AVAILABLE TOWNHOME

## JAYMAN'S STANDARD INCLUSIONS

- Core Performance with 10 Solar Panels
- BuiltGreen Canada Standard, with an EnerGuide Rating
- High Efficiency Furnace & HRV Unit
- Navien-Brand Tankless Hot Water Heater
- Triple Pane Windows

## ADDITIONAL FEATURES

- **Select FIT & FINISH™**
- Stainless Steel Kitchen Appliances
- Quartz Kitchen Countertops
- Waterproof Laminate Flooring
- Basement 3-Piece Rough-in Plumbing
- Front Landscaping
- No Condo Fees
- Detached Garage



Renderings and images are representational only.

**TO VIEW YOUR NEW DREAM HOME, CONTACT:**

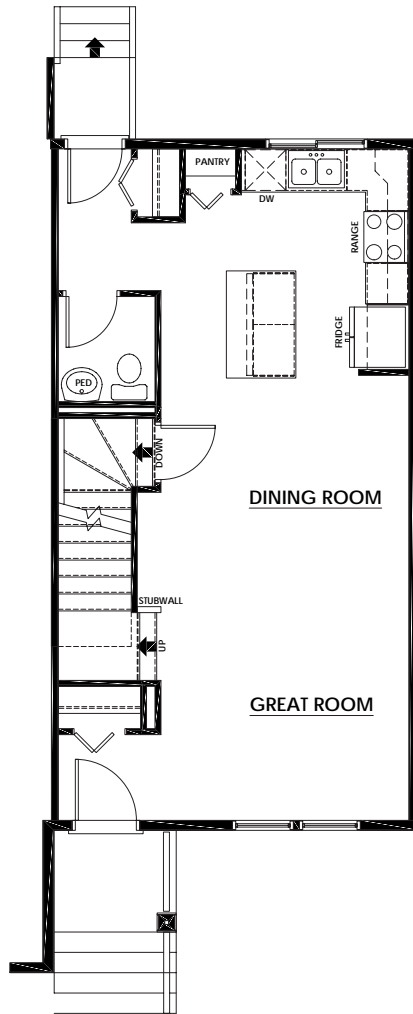
Southfork Townhome Sales Centre  
780.670.0092 | southforktowns@Jayman.com  
Jayman.com

**Jayman**  
BUILT

# LIFE READY FOR THE WAY YOU LIVE

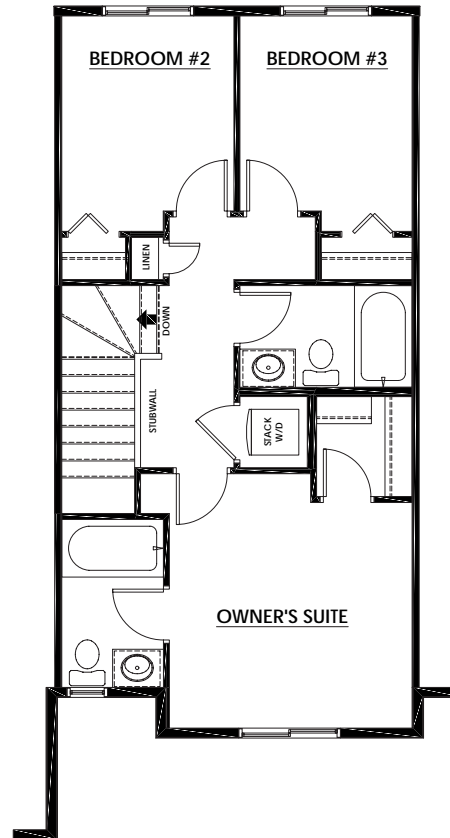
## MAIN FLOOR 612 SQFT

- Open Concept
- Rear Kitchen with Island Eating Bar
- Convenient Pantry Closet
- Front & Rear Entry Closets

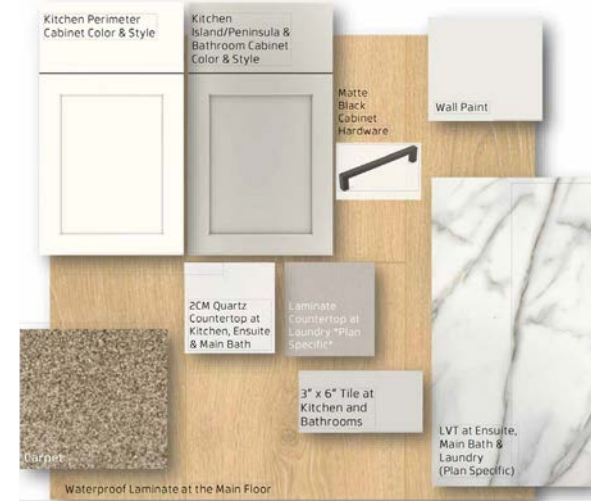


## UPPER FLOOR 638 SQFT

- Walk-in Closet in Primary Suite
- Stackable Laundry Closet



## WHITE SATIN ELEVATED SPEC PALETTE



IT'S EASIER THAN EVER TO JOIN THE **JAYMAN FAMILY**



### Maximize your home's RESALE EQUITY

Jayman Realty makes selling your home easier than ever. While you concentrate on the purchase of your new Jayman BUILT home, we'll concentrate on the sale of your existing home. We offer full MLS exposure to thousands of licenced REALTORS® and potential buyers through REALTOR.ca.



### Providing you the absolute BEST MORTGAGE

Buying a new home is one of the most important financial decisions you will make. Our mortgage professionals will guide you through the entire process, providing you with expert advice to find the best financing solution for your new Jayman BUILT home.

DISCOVER YOUR NEXT HOME AT [Jayman.com](https://www.jayman.com)