

10 SOLAR PANELS
Save up to 50% on your electricity bills annually*



1,250 Sq.Ft.



3 Bed



2.5 Bath



2 Car

BRADY18

692 SOUTHFORK DRIVE
LEDUC, AB

Q89-010-0031
Elevation QX

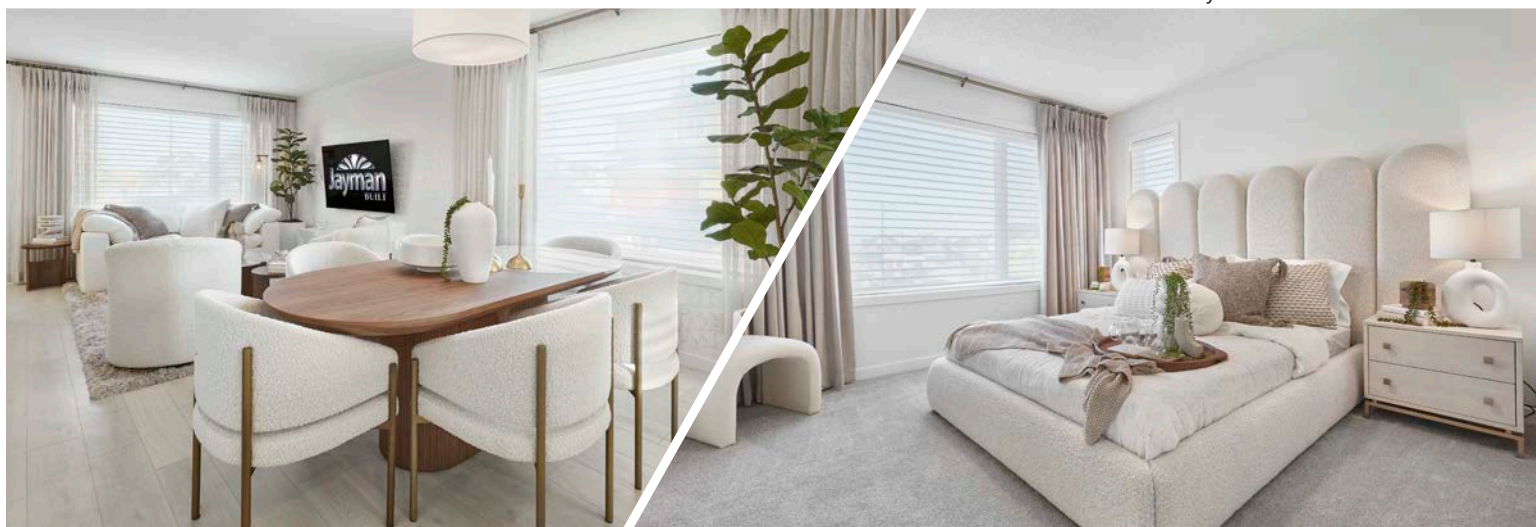
AVAILABLE HOME

JAYMAN'S STANDARD INCLUSIONS

- Core Performance with 10 Solar Panels
- BuiltGreen Canada standard, with an EnerGuide Rating
- UV-C Ultraviolet Light Air Purification System
- High Efficiency Furnace with Merv 13 Filters & HRV Unit
- Navien-Brand Tankless Hot Water Heater
- Triple Pane Windows
- Smart Home Technology Solutions

ADDITIONAL FEATURES

- Select Fit & Finish™
- Professionally Designed Aspen Elevated Colour Palette
- Convenient Side Entrance
- Kitchen Chimney Hood Fan & Built-In Microwave
- 18' x 20' Detached Garage
- Full landscaping
- Raised 9' Basement Ceiling Height including 3-Piece Rough-In for bathroom, drains for future basement laundry and bar/kitchen sink



Renderings and images are representational only.

TO VIEW YOUR NEW DREAM HOME, CONTACT:

Gareth Tovey, Area Sales Manager
587.274.1447 | southforklaned@jayman.com | Jayman.com



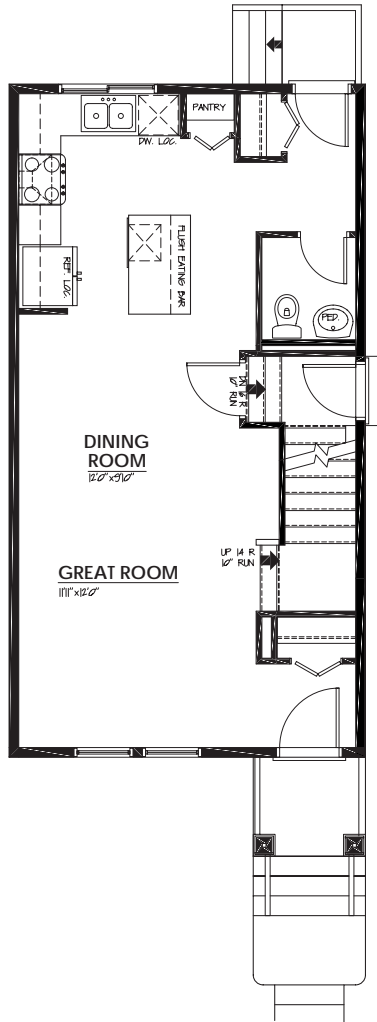
LIFE READY FOR THE WAY YOU LIVE

\$21,000
IN ENERGY EFFICIENT
FEATURES INCLUDED!

MAIN FLOOR

612 Sq.Ft.

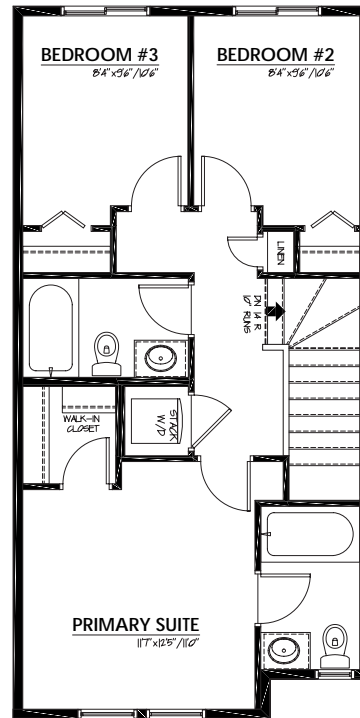
- Bright Rear Kitchen with Island Eating Bar
- Chimney Hood Fan & Built-In Microwave
- Convenient Pantry Closet



UPPER FLOOR

638 Sq.Ft.

- Primary Suite Walk-In Closet
- 3-Piece Primary Ensuite with Window
- Stackable Laundry Closet



ASPEN ELEVATED COLOUR PALETTE



IT'S EASIER THAN EVER TO
JOIN THE **JAYMAN FAMILY**



JayLink by Jayman Realty

Secure the home you really want while Jayman Realty focuses on the sale of your existing home with a JayLink, or Jayman Realty's Resale Equity Action Plan. To simplify your move, Jayman Realty can make the purchase of your new home subject to the sale of your existing home. You will receive 48 hours notice if another party puts an offer on your new home.



Providing you the absolute BEST MORTGAGE

Buying a new home is one of the most important financial decisions you will make. Our mortgage professionals will guide you through the entire process, providing you with expert advice to find the best financing solution for your new Jayman BUILT home.

DISCOVER YOUR NEXT HOME AT Jayman.com

Reflects 2025 Fit & Finish™ specifications. Specifications subject to change without notice. Renderings and images are representational only. Products and colours may be discontinued or unavailable at time of construction and a substitution required. Floorplans, specifications, windows and dimensions shown are approximate and are subject to change without notice. This document is intended for marketing purposes only and does not constitute part of the purchase agreement. E.&O.E. *Electricity savings do not include administration and other associated fees.