

8
SOLAR
PANELS
Save up to 50% on your
electricity bills annually*



1,629 Sq.Ft.

 **3** Bed

 **2.5** Bath

CAPRICE18

INQUIRE FOR PRICING

21136 - 25 AVENUE NW
EDMONTON, AB

Y53-028-0008
Elevation YX

JAYMAN'S STANDARD INCLUSIONS

- 8 500-Watt Solar Panels
- Quantum Performance™ Wall System Powered by BTRboard
- High-Efficiency Furnace with Merv 13 Filter & HRV System
- Ultraviolet Light Air Purification System
- Tankless Hot Water Heater
- Foundation Wrap to Help Repel Water
- Triple Pane R-6 Windows
- Smart Home Technology Package
- BuiltGreen Canada Certified

ADDITIONAL FEATURES

- Select Fit & Finish™
- Professionally Designed Maribel Elevated Colour Palette
- Convenient Side Entrance
- Kitchen Chimney Hood Fan & Built-In Microwave
- Quartz Countertops Throughout
- Full Landscaping
- Premium Siding Colour
- 3-Piece Rough-In Plumbing in Basement

AVAILABLE HOME



Renderings and images are representational only.

TO VIEW YOUR NEW DREAM HOME, CONTACT:

Armina Seetram, Area Sales Manager
587.524.5058 | riverview@jayman.com | Jayman.com

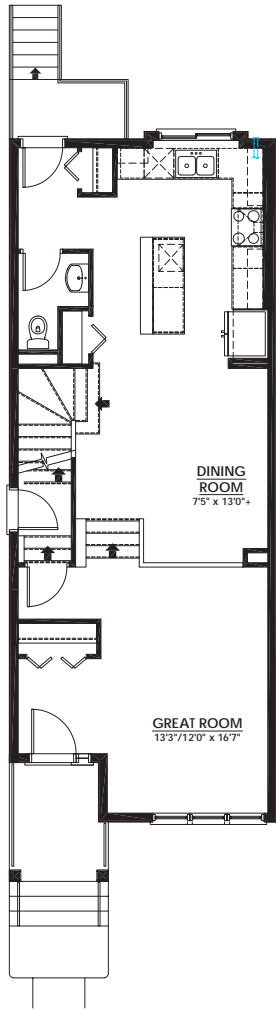


LIFE READY FOR THE WAY YOU LIVE

\$31,000
IN ENERGY EFFICIENT
FEATURES INCLUDED!

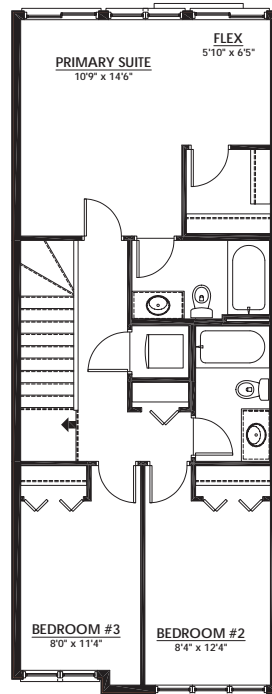
MAIN FLOOR 807 Sq.Ft.

- Bright Rear Kitchen with Island Eating Bar & Pantry Closet
- Spacious Central Dining Room
- 11' Ceiling in Great Room



UPPER FLOOR 822 Sq.Ft.

- Primary Suite Walk-In Closet
- 3-Piece Primary Ensuite
- Primary Suite Flex Area
- Stackable Laundry Closet



MARIBEL ELEVATED COLOUR PALETTE



IT'S EASIER THAN EVER TO JOIN THE **JAYMAN FAMILY**



JayLink by Jayman Realty

Secure the home you really want while Jayman Realty focuses on the sale of your existing home with a JayLink, or Jayman Realty's Resale Equity Action Plan. To simplify your move, Jayman Realty can make the purchase of your new home subject to the sale of your existing home. You will receive 48 hours notice if another party puts an offer on your new home.



Providing you the absolute BEST MORTGAGE

Buying a new home is one of the most important financial decisions you will make. Our mortgage professionals will guide you through the entire process, providing you with expert advice to find the best financing solution for your new Jayman BUILT home.

DISCOVER YOUR NEXT HOME AT [Jayman.com](https://www.jayman.com)

Reflects 2026 Fit & Finish™ specifications. Specifications subject to change without notice. Renderings and images are representational only. Products and colours may be discontinued or unavailable at time of construction and a substitution required. Floorplans, specifications, windows and dimensions shown are approximate and are subject to change without notice. This document is intended for marketing purposes only and does not constitute part of the purchase agreement. E.&O.E *Electricity savings do not include administration and other associated fees.